



# *NoDOS 2.11*

## *The 'DOS' icon Eliminator!*

*another fantastic utility from  
New World Software*

### **CONCEPT:**

Windows 3.0 is all about visual metaphors and descriptive graphics, right? Not if you are running DOS apps from within Windows! Regardless of what icon you define for the DOS app in the Program Manager, when you minimize the program, you see the same old boring 'DOS' icon, right? Wrong, because you have just downloaded the most powerful authentic solution for the 'DOS' icon blues - **NoDOS**, the 'DOS' icon Eliminator, from New World Software! **NoDOS** gives you the ability to finally use all those icons that you have purchased or downloaded from BBSes in the manner that you originally wanted to - not just in the Program Manager, but within Windows itself!

### **FEATURES:**

- Displays minimized DOS apps as icons defined by user
- Works with .COM, .EXE, .BAT and .PIF files
- Supports up to 30 icon definitions (this release)
- Works in Enhanced, Standard and Real modes
- Offers stand-alone and PubTech® File Organizer™ compatibility modes
- Features colorful user-friendly dialog box interface
- Doesn't use system hooks that slow down system performance
- Can be hidden with menu option - attempt to start second instance unhides the first
- Can be configured to run hidden on startup

### **INSTRUCTIONS:**

#### **1. Starting and Configuring NoDOS**

**NoDOS** can be started from anywhere on your hard drive, but we suggest that you place it in the directory where you store your icons. This will help you find the icons you want to use with a minimum of clicking around. When you start **NoDOS**, you will see the first of a few annoying messages that have been put into the program to nag you into registering it if you like it (Why the annoying message strategy? It's gotten me to register several shareware WinApps that I would have otherwise procrastinated on registering ad infinitum). Since you don't have a Registration Number YET, click the "Let's try it out first!" button.

**NoDOS** will then ask you to configure it for either Stand-Alone operation or PubTech® compatibility. Most people should just click "OK," as the Stand-Alone option is selected by default. Choose the PubTech® option ONLY if you are using the PubTech® File Organizer™ and its Icon Manager utility. Choosing this option will cause **NoDOS** to use the ICONMAN.INI file as its configuration file. If you accidentally choose this option, just select the Configure **NoDOS**... menu option and change it. You may also tell **NoDOS** to run hidden from view. If you choose the hidden option, **NoDOS** will

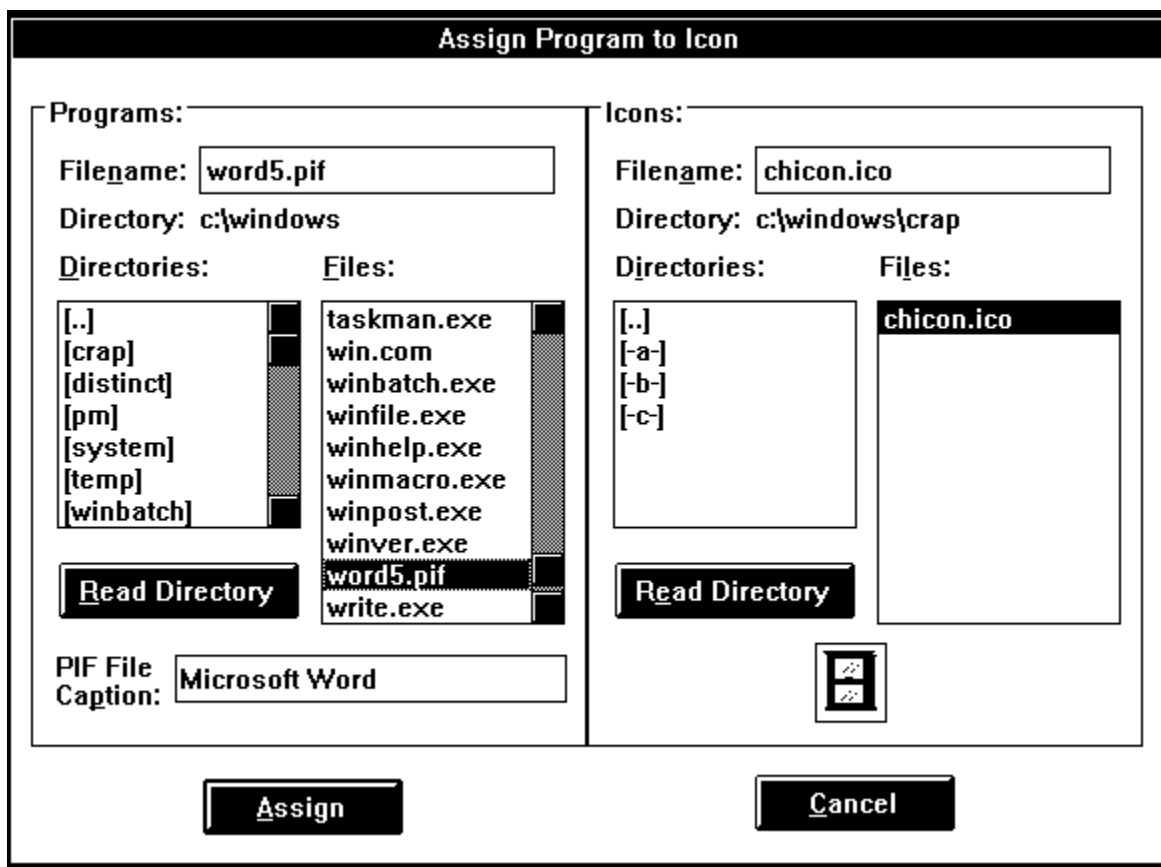
operate invisibly every time you run it. To make it visible, run a second **NoDOS**.

(Another Author's note: The PubTech® File Organizer™ is clearly the best truly graphical interface for Windows that I have seen. It's a complete replacement for the Program and File Managers, and it displays EVERYTHING as icons. It also offers drag-and-drop features that you probably won't see until Windows 4.0, and has system services like formatting, backups and one-pass diskcopy services built into it. A must-have for hard-core believers in GUI. This was an UNPAID advertisement for PubTech®.)

## 2. Assigning your Icons

### Stand-Alone operation:

Click once on the **NoDOS** icon to open its system menu and select Assign New Icon... This will open the Assign Program to Icon dialog (maybe I'll change that to 'Assign Icon to Program' in the next revision!). The dialog box looks something like this:



(Author's Note: This is a bitmapped image that may need to be rescaled to display properly.)

For the most part, use of the dialog should be intuitive, but allow me to call your attention to a few things. First, the Programs file list will show .COMs, .EXEs, .BATs and .PIFs, while the Icons file list will just show .ICOs. You cannot edit the default file specs in this revision. If you are a keyboard user, you can click the "Read Directory" buttons located under the directory listboxes (the buttons are not readable in the picture) to log a drive or directory. Keyboard jockeys can also use the underlined characters as accelerators to jump around the dialog. Mousers can double-click on the drive/directory name to log dirs. When you select the name of a .PIF file, the caption displayed as

the program's title will appear in the 'PIF File Caption' box. You can't edit that (yet). Likewise, when you select an icon on the other side, the image will appear in the little box that I forgot to give a title. If the icon is unreadable, the image



should appear. To assign an icon to a program, just select the name of the program and icon. The 'Assign' button will then be operable, and when you click the button, the assignment will be made.

(Yet another note from U-know-who: You can't remove assignments from within **NoDOS** yet.

You have to edit NoDOS.INI yourself for now. That feature will show up in a future version.)

### **PubTech\* operation:**

In PubTech\* mode, **NoDOS** uses the ICONMAN.INI file to find its icon assignments. If you edit the ICONMAN.INI file **WITHIN ICONMAN.EXE or WITH PUBTECH'S TEXT EDITOR**, **NoDOS** will detect the change and **ADD** new assignments automatically. As in Stand-Alone mode, there is no facility for removing assignments yet. If you remove assignments, just close **NoDOS** and restart it to use the updated configuration.

### **3. To PIF or not to PIF?**

**NoDOS** does have the ability to change icons for .COMs, .EXEs and .BATs run without PIF files, but the use of PIF files is strongly encouraged. You see, **NoDOS** uses a window's caption, or title, to determine what icon it should use to display the program. DOS programs and batch files run without PIF files end up with the file name (minus the extension) as the window title, all in ugly capital letters. So, if you run COMMAND.COM without a PIF file and use Ctrl-Esc to jump back to Windows, you will see a big ugly 'COMMAND' under the pretty new icon that **NoDOS** is displaying for you. If you use a PIF file, you can define the caption to whatever you want, up to 30 characters (I use WinDOS, and start the DOS session in a window, as I usually operate in 386 Enhanced Mode). If you use PIF files, be sure to associate the icon with the PIF file, not the executable program. If you assign an icon to COMMAND.COM, **NoDOS** will always look for a window titled 'COMMAND,' even though you may have created a COMMAND.PIF file to run COMMAND.COM with a customized title. Assign an icon to COMMAND.PIF, and **NoDOS** saves the PIF file caption and looks for the caption to recognize the window. Furthermore, if for some bizarre reason you have two programs with the same base filename and different extensions, **NoDOS** will always display them both with the same icon. Use PIF files as much as possible.

(Important note for PubTech® users: Your PIF files must be on your DOS path, the Windows or Windows/System subdirectories or else **NoDOS** won't find them.)

### **4. Don't move your icons around.**

When **NoDOS** makes an icon assignment, it records the title of the window and the filename of the icon. Thus, the programs can be anywhere on your drive, but **NoDOS** tries to read all of the icons when it starts up. Don't worry about what directory **NoDOS** is in when you start it, because the complete DOS path for the icon file names are stored. Just don't move them around without updating your NODOS.INI file. Otherwise, you're gonna see a lot of those X's instead of your icons!

### **41/2. Hiding NoDOS.**

If you don't want to look at the suave 'NoDOS' icon all the time, you have the ability to hide **NoDOS**. This can be done in one of three ways. First, you can select the Hide menu option, which will cause **NoDOS** to instantly vanish from your screen. You won't even see it in the Task Manager. Never fear, though, it is still working, and if you want it to reappear so that you can assign some more icons or write down our address, just try to start another **NoDOS**. **NoDOS** will reappear, ready to do your bidding! The second method of hiding **NoDOS** involves selecting the Hide NoDOS on startup option of the Configure **NoDOS**... dialog. This was covered in section 1. The third method of hiding **NoDOS** is to put a piece of opaque masking tape over a portion of your screen and then move the **NoDOS** icon under it. This method is not recommended.

#### **5. Register NoDOS.**

I'm only asking \$20.00 for a utility that will finally let you get the complete benefit of all those icons that you have downloaded from BBSes like this one. Registration will stop those annoying 'Register Me!' messages that will pop up forever if you don't register **NoDOS**. Registration will give me definite feedback as to the REAL demand for my software ideas (I have a lot more). Registration will help your karma and help me feed my cats. So do it. Show me that you care!

Send your \$20.00 to:

***New World Software  
P.O. Box 969  
Boston, MA 02118-0969  
Attn: Ken Granderson***



Please include a phone number so that I can call you to give you a Registration Number. Otherwise, I'll have to send it in the mail, which will take longer.

#### **6. Tell me about problems and suggestions.**

This software has been working on my system for a while, and I have not programmed in anything so funky that I anticipate any incompatibilities, but you know about Murphy's Law, so if the program fails in any way, let me know by phone, email, carrier pigeon, or whatever. I want this program to work for everyone (whatta guy!). And, if you think that something should be added or improved, let me know! One of the nice things about ShareWare products is that they are written by real people just like you, who will listen to your suggestions and very possibly use them. Suggestions that I use (that I haven't already planned) will receive full credit in documentation and 'About...' windows.

#### **7. Treat other people the way that you want to treated.**

I didn't really have any more instructions, and I wanted the instruction list to come out to 7. Seriously, though, if each one of us works on following Instruction #7 regardless of what other people do, we will be transforming our home/work/school/community environments into much

happier, positive and productive places. Enough of the soapbox for now. Enjoy the program!

---



**Special Thanks to:**

Jim White and Edward Chase II, for beta testing NoDOS.  
The people who registered PFBFix and proved to me that the ShareWare concept was a viable marketing strategy.  
The people who used PFBFix who called or sent mail from as far away as Japan. Hopefully NoDOS will travel as far as fast.

Jim Freeman of Swedesboro, NJ, who suggested that the 'Hide on startup' feature be implemented via a NODOS.INI setting instead of using a command-line switch, like '/h.'

C.V., for making me go to sleep when I wanted to stay up all night working on this, and for being patient with me while I spent all my time with the computer...

Legal-type stuff follows.

NODOS

Copyright © 1991 by New World Software.

All rights reserved.

## SOFTWARE LICENSE

NoDOS is not and has never been public domain software, nor is it free software.

Non-licensed users are granted a limited license to use NoDOS on a 14-day trial basis for the purpose of determining whether NoDOS is suitable for their needs. The use of NoDOS, except for the initial 14-day trial, requires registration. The use of unlicensed copies of NoDOS, outside of the initial 14-day trial, by any person, business, corporation, government agency or any other entity is strictly prohibited.

A single user license permits a user to use NoDOS only on a single computer. Licensed users may use the program on different computers, but may not use the program on more than one computer at the same time.

No one may modify or patch the NoDOS executable files in any way, including but not limited to decompiling, disassembling, or otherwise reverse engineering the program.

A limited license is granted to copy and distribute NoDOS only for the trial use of others, subject to the above limitations, and also the following:

**NoDOS must be copied in unmodified form, complete with the file containing this license information.**

**The full machine-readable NoDOS documentation must be included with each copy.**

**NoDOS may not be distributed in conjunction with any other product without a specific license to do so from New World Software.**

**No fee, charge, or other compensation may be requested or accepted, except as authorized below:**

**Operators of electronic bulletin board systems (sysops) may make NoDOS available for downloading only as long as the above conditions are met. An overall or time-dependent charge for the use of the bulletin board system is permitted as long as there is not a specific charge for the download of NoDOS.**

**Software vendors may distribute NoDOS, but only after obtaining written permission from New World Software. Such permission is usually granted. Please write for details (enclose your catalog). Vendors may charge a disk duplication and handling fee, which, when may not exceed five dollars.**

**Non-profit user groups may distribute copies of the NoDOS files to their members, subject to the above conditions, without specific permission. Non-profit groups may collect a disk duplication fee not to exceed five dollars.**

EXCEPT AS PROVIDED ABOVE, NEW WORLD SOFTWARE DISCLAIMS ALL WARRANTIES, EITHER EXPRESS OR IMPLIED, INCLUDING, BUT NOT LIMITED TO IMPLIED WARRANTIES OF MERCHANTABILITY AND FITNESS FOR A PARTICULAR PURPOSE, WITH RESPECT TO THE PRODUCT. SHOULD THE PROGRAM PROVE DEFECTIVE, THE PURCHASER ASSUMES

THE RISK OF PAYING THE ENTIRE COST OF ALL NECESSARY SERVICING, REPAIR, OR CORRECTION AND ANY INCIDENTAL OR CONSEQUENTIAL DAMAGES. IN NO EVENT WILL NEW WORLD SOFTWARE BE LIABLE FOR ANY DAMAGES WHATSOEVER (INCLUDING WITHOUT LIMITATION DAMAGES FOR LOSS OF BUSINESS PROFITS, BUSINESS INTERRUPTION, LOSS OF BUSINESS INFORMATION AND THE LIKE) ARISING OUT OF THE USE OR THE INABILITY TO USE THIS PRODUCT EVEN IF NEW WORLD SOFTWARE HAS BEEN ADVISED OF THE POSSIBILITY OF SUCH DAMAGES.

Use of this product for any period of time constitutes your acceptance of this agreement and subjects you to its contents.

#### U.S. GOVERNMENT RESTRICTED RIGHTS

Use, duplication, or disclosure by the Government is subject to restrictions as set forth in subdivision (b) (3)(ii) of the Rights in Technical Data and Computer Software clause at 252.227-7013. Contractor/manufacturer is New World Software - P.O. Box 969, Boston, MA 02118

#### TRADEMARKS

DOS and Windows are trademarks of Microsoft Corporation.

PubTech is a registered trademark of Publishing Technologies, Inc.

NoDOS is a trademark of New World Software.